

Shiripuno Lodge

*The finest
wildlife
destination in
Ecuador!*

**Yasuni Biosphere Reserve
Amazon Rainforest
Ecuador**

We have the advantage of being able to offer you exclusive itineraries in the depths of the Ecuadorian Amazon. Shiripuno Lodge enjoys the privilege of being located in the core of the 16.820 km² of the Yasuni Biosphere Reserve (Yasuni National Park & Waorani Ethnic Reserve)

The Yasuni is situated at a unique biographical position, the crossroads of the Andes (Andean foothills), the Western Amazon, and the Equator; where the diversity of amphibian, bird, mammal, and vascular plant species reach their global maxima.



The Waorani People from the community of Neoneno have a legal agreement with Shiripuno Tour Operator. Shiripuno Lodge organize and maintain tourist activities inside their Reserve and through this responsible tourism help sponsor the development of the Community. Shiripuno Lodge is constantly training and creating job opportunities for the Waorani People, as well as supporting them with transportation, medicine and educational materials.

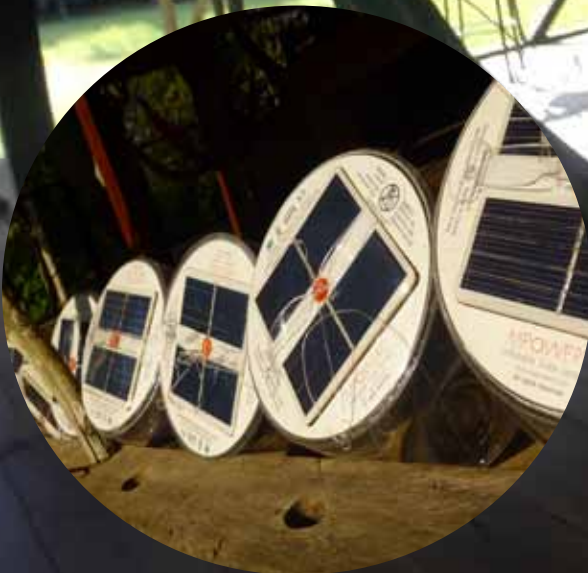
LODGING

Our cabins, furnished with both single and double beds, accommodate up to three people per room. All rooms have private bathrooms and hammocks. After dark we use candles, creating perfect harmony with the sights and background sounds of the rainforest. Recently we have also equipped each room with a rechargeable solar lantern. Solar electricity is available to charge camera batteries and other electronic devices.



RESTAURANT

You will be delighted by our cuisine. Three set menus daily, freshly baked bread, tropical fruit juices and a perfect balance between Ecuadorian and international food that will make you feel at home. Vegetarian and other dietary requirements can be accommodated given prior notice at the time of booking.



HIGHLIGHTS

- Pristine Forest for miles around
- Orchid Garden
- Wildflower Garden
- Forest Clay licks
- Forest Swamps
- Oxbow Lakes
- Moriche palm Swamps
- 100mt high natural viewpoint
- Exclusive Amazon beaches
- Remote location, away from oil activities
- 30 km of well-maintained and managed trails
- No other tourist facilities around
- No Speed boats or barges

ACTIVITIES

Natural History Hikes
Birdwatching Walks
Amphibian & Reptile Walks
Mammal Walks
Birdwatching Float
Sunrise Canoe Float
Sunset Canoe Float
Full Moon Canoe Float
Night Walks
Nature Photography
Swimming
Visit to the Waorani community



VISITOR GUIDELINES:

Our plans described below have been designed based on many years of experience in the Yasuni. These order and exact details of the activities may be modified depending on weather and other environmental factors beyond our control. We encourage our visitors to experience and explore the Yasuni Wilderness with a minimal environmental impact, following our guidelines below.

Silence in the forest at all times

No handling of wildlife

Birding Playback is limited to 3 tries per species/location

Music is personal

Stay on the trails

No flash to be used on Birds and Mammals.



NATURE TOURS

Shiripuno Lodge had laid out Nature Tours with a duration of 4 and 5 days in order to enjoy the abundance and diversity of life with a series of activities to explore and learn about the different habitats types, their wildlife and the plants used by the Waorani People who still practise hunting and gathering in the Yasuni.

FOUR DAY TOUR

DAY 01: Quito-Coca by airplane. From Coca we will travel 90 km south into the Yasuni Biosphere Reserve along the Auca Road, by pick-up or bus to the Shiripuno Bridge (approx. 2:30 hrs).

A Box Lunch will be served at this point. We will then navigate 65 km (approx 4 hrs depending on water



level) downstream by motorized canoe to reach Shiripuno Lodge. This will become your first experience of the wide diversity of wildlife of the Amazonian Rainforest. Dinner and lodging at Shiripuno Lodge.

DAY 02: Breakfast. We will navigate by canoe a short distance by in canoe to start our morning hike (3-4 hrs.) In pristine Rainforest along the Mirador Trail, we will introduce you to millions of reasons to preserve the Rainforest for future generations. The Waorani and the Naturalist guides will provide you with information and explanations about the biodiversity of the Rainforest; and the medicinal plants used by the indigenous people.

Lunch at the lodge.

In the afternoon we will drift down the Shiripuno River in canoe observing riverside wildlife.

Dinner and lodging at the lodge.

DAY 03: Before breakfast we will descend the Shiripuno River listening to and watching the Rainforest and its inhabitants waking up.

Breakfast.

We will then explore a different type of forest and increase our chances of finding more animals.

Lunch at the lodge.

In the afternoon we will take the motor canoe and visit one of the small oxbow lakes where it is possible to see different species of plants and animals such as the bizarre and unique bird, Hoatzins. On our return we will experience the Rainforest at night searching for nocturnal riverside fauna.

Dinner and lodging at the lodge.

DAY 04: After breakfast, we will navigate upstream to the Waorani Community. Early canoe rides are



great to surprise animals crossing the river such as Capybara, Tapir or resting Caimans. Birds such as Macaws and Toucans can also be seen from the canoe. At the Waorani Community you will see the effects of the modern world while seeing how the Waorani still retain most of their traditions such as hunting with blowguns and poisoned darts, the knowledge of the Rainforest and their language Wao Terero.

Responsible tourism brings revenue to all of the families within the community, by selling handcrafts, employing canoe drivers, native guides, housekeeping and kitchen assistants and others activities.

We will continue the navigation upstream to the bridge, having lunch on the way, before then taking the bus back to Coca (arrival at 16:30 approx.).

5 DAY TOUR

Days 1,2,3 and 5 as above.



DAY 04: Breakfast.

We will visit a Forest Clay Lick. This is a location within the forest where mammals and birds with a plant based diet come to consume mineral rich water and clay.

Lunch at the lodge.

A walk to a regular Blue-and-Yellow Macaw roosting site. Optional tubing downstream to the lodge.

Dinner and lodging at the lodge.

BIRDWATCHING

Imagine birding in the most remote forest to be found in the Ecuadorian Amazon. Far from speed boats, cargo barges, jam-packed blinds and noisy generators, you will be amazed by the birdlife to be seen before you even arrive at the lodge. On our way downstream we can commonly observe 4 and of-



ten 5 species of macaw flying over the river. Most nights from the comfort of your bed you can hear rarities such as Nocturnal Curassow, Black banded Owl, Gray-winged Trumpeters as well as the unique call of the Great Potoo, the screech of Tawny-bellied Screech Owls, the cow like call of the Rufescent Tiger-Heron, and the melody of the Pauraque. Shiripuno Lodge is in the center of the biggest IBA (Important Bird Area) of Ecuador: The Great Yasuni. Our location will have all birders on the edge of their seats, and the opportunity of seeing Amazonian specialties such as Salvin's Curassow, Nocturnal Curassow, Red-and-green Macaw, Pearly Antshrike, Hairy-crested Antbird, Black-necked Red Cotinga among others is not to be missed.

DAY 01: AS ABOVE

DAY 02: Breakfast.

We will begin our tour with a wander into the primary forest behind the lodge to look for Army Ant Specialists such as the Lunulated Antbird, White-plumed Antbird and Sooty Antbird. We will also visit the different territories of the rare Wing-banded Antbird, Undulated Antshrike, Pearly Antshrike and Yellow-billed Jacamar. There will be time to observe Striped Manakin and Golden-headed Manakin too.

Lunch at the lodge.

In the afternoon we will visit an Oxbow Lake where we can search for the White-lored Antpitta, Long-billed Woodcreeper, Green-and-rufous Kingfisher and Chestnut-headed Crake.

Dinner and lodging

DAY 03: Breakfast.

We'll walk the Mirador Trail to an incredible natural viewpoint that will give us canopy species such



as Brown Jacamar, Yellow-billed Nunbird, Yellow bellied Tanager, Purple Honeycreeper, Spangled Cotinga, Black-tailed Tityra, Yellow-browed Tody-Flycatcher, Paradise Tanager and others. Along this trail, mixed flocks with Red-billed Scythebill, Rufous-tailed Antwren and Amazonian Barred Woodcreeper can be seen as well as there being territories of Coraya Wren, Ochre-striped Antpitta, Ash-throated Gnateater, Cinnamon Neopipo, Yellow-browed Antbird and lekking sites of both Blue-backed Manakin and White-crowned Manakin.

DAY 04: Breakfast. Our next birding trip will be to El Misterioso Trail. An excellent birding trail with a lot of mixed flocks with Yasuni Antwren, Red crowned Ant-Tanager, Rio Suno Antwren and Ruddy Foliage-gleaner. Along this trail are territories of Thrush-like Antpitta, Ringed Antpipit, Banded Antbird and others.



The forest and birds here will keep us busy the entire day as we add more species to our list, so we will have a box lunch in the forest.

DAY 05: Breakfast. Birding along Skutch Trail. Here we will be looking for the Salvin's Curassow, Ocellated Woodcreeper, Spotted Puffbird, Black-necked Cotinga, Grayish Mourner, Long-winged Antwren and others.

Lunch at the lodge.

In the afternoon we will retry for some of the species we may have missed in close vicinity to the lodge.

DAY 06: Breakfast.

Birding along the river while on our way to El Saladero trail that leads to the forest clay lick where there is a chance to find the Scarlet Macaw, Orange-cheeked Parrot and Scarlet-shouldered Parrotlet.



We will have lunch deep in the Rainforest.

DAY 07: AS ABOVE

AMAZONIAN AMPHIBIANS & REPTILES

Yasuni harbours roughly one-third of the Amazon Basin's amphibian and reptile species, despite covering less than 0.15% of its total area. Shiripuno Lodge has designed a trip, the first of its kind to explore the diversity of the Herpetofauna of the Yasuni Herpetofauna: 271 species of amphibians and reptiles.

DAY 01: AS ABOVE

**DAY 02 - 06:
Breakfast**

Hikes to the surrounding trails to hunt for diurnal



species.

Brightly coloured Poison Frogs (*Epipedobates* sp.) can be found during the day calling from the forest floor. Forest Lizards can be encountered next to mud puddles and light gaps within the forest. Smooth-fronted Caiman (*Paleosuchus trigonatus*), Yellow-spotted River Turtle (*Podocnemis unifilis*) and Golden Tegu (*Tupinambis teguixin*) bask along the river on a sunny day. Snakes such as Green-striped Vine Snake (*Oxybelis argenteus*) are found during the day within vines in the understory, while Tiger Rat Snakes (*Spilotes pullatus*) occurs in light gaps and Common False Viper (*Xenodon rhabdocephalus*) in terra firme leaf litter. Fer-de Lance (*Bothrops atrox*) next to rivers during sunny days, or the Bushmaster (*Lachesis muta*) resting on big buttresses.



Lunch.

Different trails, different forest, different species

Dinner.

Night walks to different habitats for nocturnal species. From tiny Glass Frogs (*Cochranella* sp.) resting on vegetation over the water to the impressive Smoky Jungle Frogs (*Leptodactylus pentadactylus*) calling out from the river bank. The Tree Frogs (*Hypsiboas* sp.) become very active as night approaches especially next to an oxbow lake.

Anoles can be found resting on small branches close to the ground at night and Western Coral Snakes (*Micrurus spixii*) at night after the rain.

The remote Tropical Rainforest of Shiripuno Lodge offers a unique opportunity to find a great number of species of the Amazonian Herpetofauna.

DAY 07: AS ABOVE



MAMMAL TRACKING

Our Mammal Tracking Tour is a true adventure into the heart of the Amazon Rainforest of Ecuador. We are going to be exploring a unique place which holds about 30% of the mammalian diversity of the entire Amazon Basin. Our destination is the world known Yasuni Biosphere Reserve (Yasuni National Park & Waorani Ethnic Reserve), located between the mighty Napo River and the Curaray River.

Yasuní Biosphere Reserve location nurtures this abundance, it sits at the intersection of the Andes, the Equator, and the western amazonian forests, an ecological bull's-eye where extremely rich communities of plants, amphibians, birds, and mammals in South America converge.



Finding mammals in the amazon rainforest is a challenging game, which requires us to use all of our instincts. In the wilderness, it's about watching, waiting and trying to surprise the creatures . We have a set of different activities during this trip that we will organize once at the lodge in order to maximise our chances of finding as many species as possible.

Factors that determine the order of activities include the weather, water levels and the presence of fruiting plants in the forest.

Activities include

Setting Trap Cameras

Visiting Clay Licks

Visiting Fruiting Trees

Sitting at known preferred sites

Night Walks



Canoe Drift

We invite you to find and observe an incredible number of exotic and iconic mammal species of the Amazon Rainforest,

DAY 01: Quito-Coca by airplane. From Coca we will travel 90 km south into the Yasuni Biosphere Reserve along the Auca Road, by “Chiva” (small local bus) to the Shiripuno Bridge (approx. 2:30 hrs).

Box Lunch will be provided.

We will navigate 65 km downstream by motorized canoe to reach the Shiripuno Lodge. The canoe journey will take approximately 4 hours depending on water levels. It will form your first experience of the jaw dropping diversity of wildlife of the Amazonian Rainforest.

Dinner and lodging at the Shiripuno Lodge.



Setting up Camera Traps on nearby trails.

DAY 02: Breakfast.

We will navigate a short distance by canoe to start our morning hike (3-4 hrs.) into pristine Rainforest along the Mirador Trail. The aim of this trail is to share millions of reasons to preserve the Rainforest for future generations. The Waorani and the Naturalist guides will provide you with information and explanations about the biodiversity of the Rainforest; and of course we will focus on the mammals and their lifestyles. The destination is an incredible viewpoint looking out over the rainforest canopy.

Lunch at the lodge.

In the afternoon canoe drifting along the Shiripuno River.

Dinner and lodging at the lodge.



DAY 03: Breakfast. We'll head to a Forest Clay Lick, a location within the forest where mammals and birds with a plant based diet come to consume mineral rich water and clay.

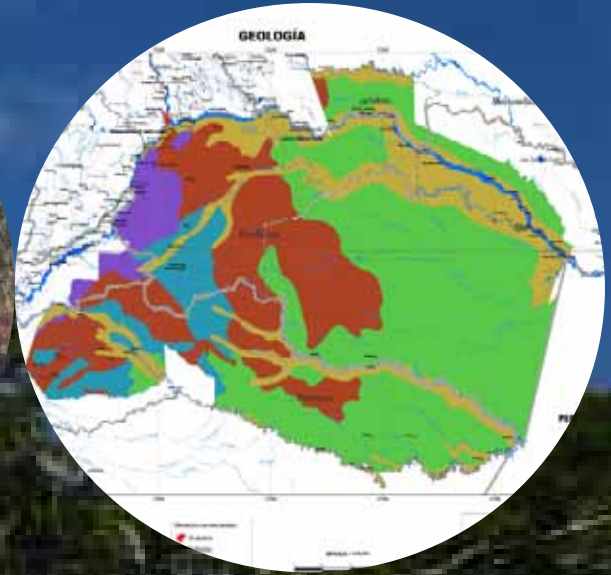
Lunch at the lodge.

Afternoon Activities.

Dinner and lodging at the lodge.

Day 04: Breakfast and navigating along the Shiripuno River to get to the El Saladero trail that leads to another forest clay lick, where there is a chance to find herds of White-lipped Peccaries, Red Brocket Deers, Scarlet Macaws, Orange-cheeked Parrot and Scarlet-shouldered Parrotlet. We will have lunch in the middle of the Rainforest.

DAY 05 -07: Breakfast. Exploring more trails, Moriche swamps and Oxbow Lakes.



DAY 08: RETURN TO COCA AS ABOVE

Shiripuno Lodge suggests that you only bring to the lodge items that you are going to use in the forest. There really is no reason to carry your larger suitcase. Luggage permitted is 10 Kilos. Below is a recommended packing list.

PERSONAL ITEMS

¥ Passport & Vaccine Card

¥ Personal First Aid Kit

¥ Personal Medicine*

¥ Long Trousers

¥ Long Sleeves

¥ Wind Jacket

¥ Cap or Hat



¥ T-Shirts

¥ Shorts

¥ Socks

¥ Raincoat

¥ Sunglasses

¥ Water bottle

¥ Bathing Suit

¥ Insect Repellent

¥ Waterproof bag

¥ Zip-lock Bags for wet cloths

¥ Soap & Shampoo (Biodegradable!!!)

TECHNICAL ITEMS

¥ Camera with Extra Memory Card

¥ Spare Camera Batteries and charger



¥ Flashlight with Rechargeable Batteries

¥ Waterproof Binoculars (8 X 32 or 10 X 42)

¥ Notebook and Pencil

COMMUNITY ITEMS (Optional: for the community children)

¥ 50 Page Notebooks

¥ Crayons

¥ Pencils

¥ Markers

¥ Rulers

¥ Tooth Brush

¥ Toothpaste

How do I to get to Shiripuno Lodge?

A 30 minute flight from Quito to Coca (Francisco de Orellana), or a 6 hour night bus ride from Quito.



Our staff will meet you in Coca at the Hotel Auca or at the Airport.

We start our trip at 10:30 AM.

We will drive you along the Auca Road for 2:30 hours to the Shiripuno River.

Downstream on the Shiripuno River for 4 hours to reach Shiripuno Lodge

Important Travel Information

US citizens need a current passport to travel to Ecuador that is valid for at least six months beyond your return date. Residents of other countries should inquire as to the most current travel requirements. You are advised to carry traveler's insurance which, at a minimum, covers both equipment loss and medical evacuation coverage. Overall, the risk of disease, including malaria, is exceedingly low, but you need to consult with a physician or other medical profes-



sional to discuss the risks. At a minimum, a Yellow Fever and Hepatitis A, B vaccination is needed to enter Yasuni Biosphere Reserve and you must present proof of vaccination prior to the start of the trip.

The Ecuadorian Government had created the Intangible Zone that spans nearly 3,000 square miles (758,051 hectares) and is designed to protect the core territory of a Waorani family group known as the Tagaeri and Taromenane, the last two known groups of indigenous peoples living in voluntary isolation in Ecuador.

The Shiripuno Research Center Volunteering Programs consists of 4 and 8 weeks in the Waorani Community and in the forest with a whole series of activities and work assignments.



Our Goals:

- To teach English to the Waorani School
- To create the Yasuni Wildlife Inventory
- To create educational material for local schools
- To maintain 30 km of trails
- To create 50 km of trails
- To download photos from Camera traps
- To help build and maintain volunteer facilities
- To help build scientific facilities
- To build an online database



Shiripuno Lodge



www.shiripunolodge.com